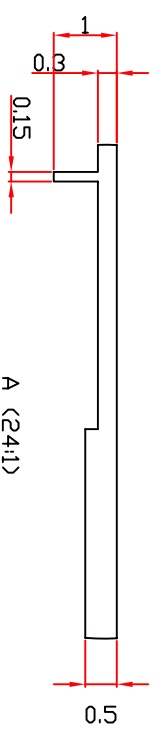
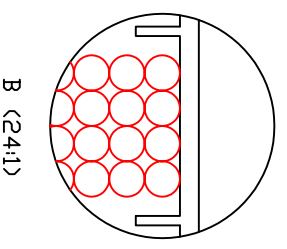
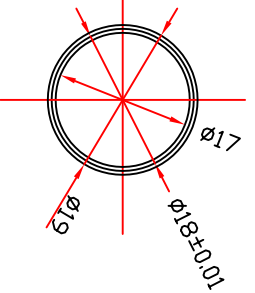
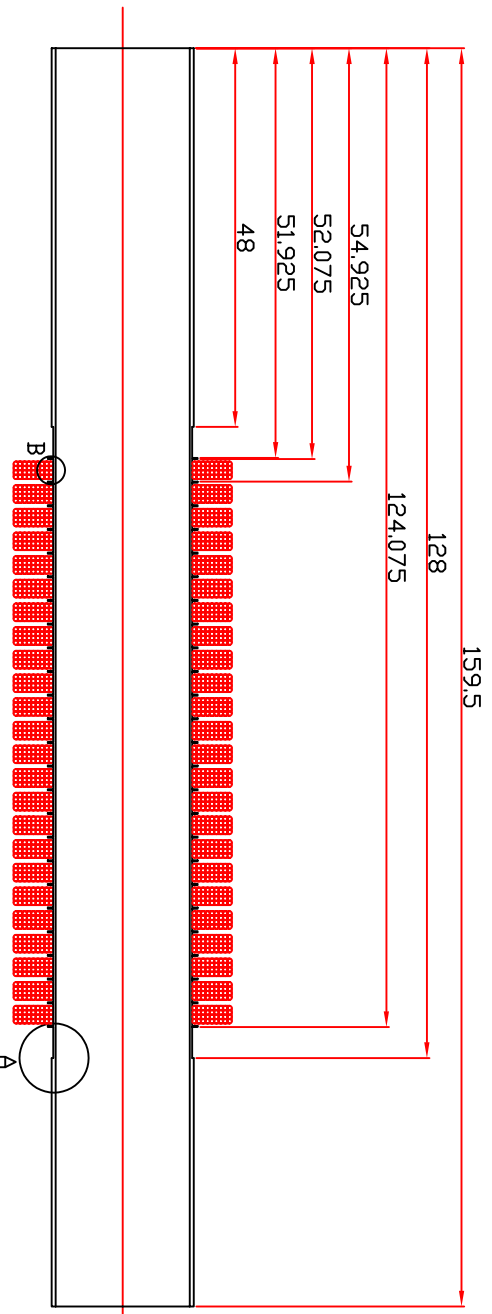


- NOTES:
- 1) Tolerances unless stated:
Linear: $\pm 0.1\text{mm}$,
Angular: $\pm 0.25^\circ$
 - 2) Remove all burrs
 - 3) Do not scale
 - 4) Surface texture $\sqrt{1.6}$
 - 5) $\varnothing 19\text{mm}$ standard tube
 - 6) Wire size=0.56mm, 36 turns
 - 7) 24 coils equ spaced
 - 8) 25 sets of shims equ spaced



THIRD ANGLE PROJECTION DRAWING PREPARED IN ACCORDANCE TO BS308		GENERAL SURFACE FINISH: $\mu\text{m CLA R}_a$ UNLESS OTHERWISE STATED		DIMENSIONS: mm	
MATERIAL		HEAT & SURFACE TREATMENT		TITLE MICE TARGET- Stator	
ALL PROPRIETARY RIGHTS IN THE SUBJECT MATTER HEREOF ARE RESERVED BY SHEFFIELD UNIVERSITY AND NO PERMISSION IS GRANTED TO REPRODUCE THIS PRINT IN WHOLE OR IN PART, OR TO DISCLOSE ANY OF THE INFORMATION UNLESS IT TO OTHERS.		SCALE: 3 : 1		DATE: 12/10/07	
DRAWN: M. MOHAMMAD		RAL REF:		DRAWING NUMBER TD-SU_16	
CHECK: MM		APP:		A4	
ISSUE DATE: 30/11/07		INITIAL ISSUE NOTES:		UNIVERSITY OF SHEFFIELD DEPARTMENT OF PHYSICS & ASTRONOMY SHEFFIELD S3 7RH Tel: 0114-2223543	